

SCHMIDT STRUCTURAL PRODUCTS®

Work Platforms and Safety Products



www.schmidtstructural.com

SCHMIDT 
STRUCTURAL PRODUCTS

About Schmidt Structural Products

Schmidt Structural Products (formerly W.A. Schmidt), Inc. has set the standard for quality and design in custom widespan mezzanines/work platforms and related material handling products, systems, and equipment since 1965. During that time we have earned a reputation for well-built products, excellent engineering and attentive customer service.

All Schmidt products, from mezzanines/work platforms to stacking racks to barrier rails, are designed and constructed from structural steel components for optimum strength, rigidity and safety. Our engineers can provide solutions that meet the unique challenges of your facility. We carefully consider all of your specifications such as load requirements, seismic construction standards and traffic flow so that your Schmidt product is installed smoothly and is guaranteed to meet your expectations.

We are so confident in the quality of our SpaceLoft mezzanines/work platforms that we stand behind them with a Lifetime Warranty guaranteeing they will be free from defects in material or workmanship.



Our Facility

Schmidt Structural Products designs and manufactures the highest quality mezzanines/work platforms, system components and safety products in a 475,000 square foot manufacturing facility, located in Hamilton, North Carolina.

Today, Schmidt Structural Products employs 50 full time team members including a department of designers with support of professional structural engineers.

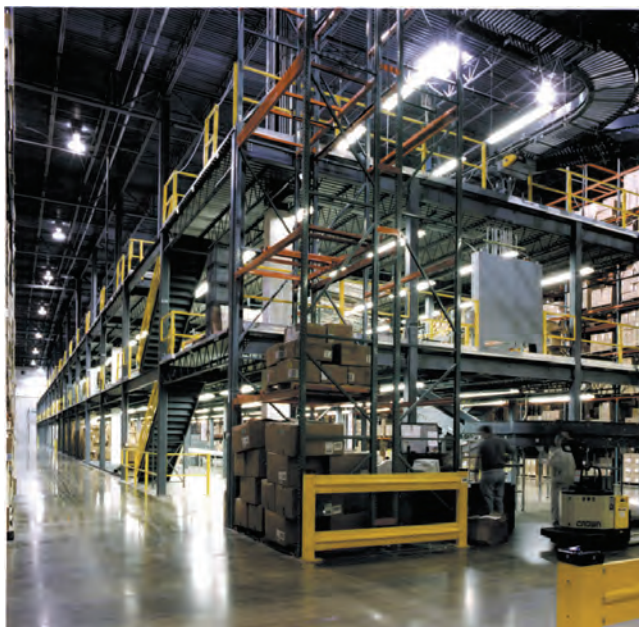
Schmidt Structural Products strives to provide excellent service, products and on-time performance. For the most advanced products and services available in structural mezzanines/work platforms, turn to Schmidt Structural Products.

Customer Service

Schmidt Structural Products Customer Service staff is a customer friendly, knowledgeable team that is dedicated to excellence in service delivery and communication. The team is based out of Schmidt's Greenville, NC headquarters.

Our goal is to provide professional, courteous, timely and accurate service to every customer in a fair, consistent and accessible manner. Schmidt's distributor partners and customers are our number one priority and focus.





Leadership in Energy and Environmental Design (LEED)

LEED initiatives drive the construction of environmentally sound and sustainable projects more than ever before. While the US Green Building Council does not certify or endorse individual products or materials, how they're made and where you source them can help your project meet its LEED certification objective.

Generally speaking, our steel products contain 70% to nearly 97% of total recycled content.



Safety Guards

QuickShip Barrier Rail and Posts.....	4
Barrier Rail	5
Guide Rail and Protectors	6
Bollards and Guards.....	7



Mezzanines/Work Platforms

SpaceLoft™ and CardioDeck.....	8
Conveyor Supports and Catwalks	9
Decking Material	10



Stairs and Ladders

Stairs and Stair Towers.....	11
Crossovers and Landings.....	12
Ladders and Ship Ladders.....	13



Handrail and Gates

Handrail and Gates.....	14
-------------------------	----

Cantilever Rack

Cantilever Rack	15
-----------------------	----



Stacking Cradles

Cradles and Spreader Beam Unit	16
--------------------------------------	----

Color Chart.....	17
Penco® Shelving Systems.....	18
Lifetime Warranty	19



QuickShip Barrier Rail and Posts

Schmidt's QuickShip Barrier Rail is engineered for strength and durability at an affordable price. Barrier Posts are constructed of a 4" x 4" high-strength ASTM A-36 structural steel on a 10" square x ½" thick base plate. The 9.5" high rails are roll formed 11 gauge steel.

Post can be used as a Bollard and flared ends are not available. Protective hard, flat plastic caps are included to close off the top of each post. Anchoring hardware is included. Posts and barrier rail are powder coated in Schmidt 007 Safety Yellow.



QuickShip Barrier Rail ships in 72 hours from the Philadelphia and Salt Lake City distribution centers.

QuickShip Barrier Rail

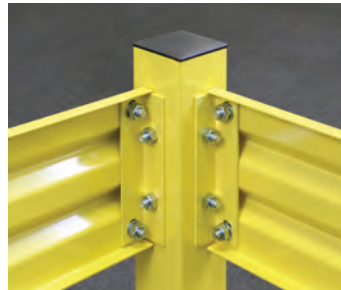
Catalog Number	Length	Weight (lbs.)
BRL-04H	4'	19.2
BRL-05H	5'	24.0
BRL-06H	6'	28.8
BRL-07H	7'	33.5
BRL-08H	8'	38.3
BRL-09H	9'	42.3
BRL-10H	10'	47.9

Note: All barrier rail includes mounting clips and hardware.

QuickShip Posts

Catalog Number	Description	Height	Weight (lbs.)
PLA-15H	single barrier rail post assembly	15"	26.0
PLA-30H	single or double barrier rail post	30"	38.0
PLA-44H	single, double, or triple barrier rail post assembly	44"	46.0

Note: All posts include plastic cap, concrete floor anchors, and yellow plugs.

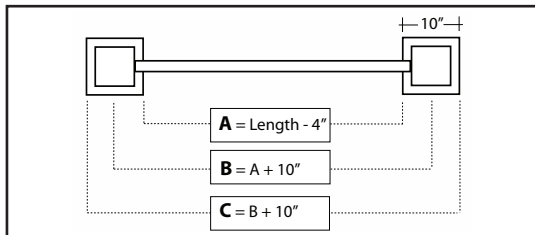




WorkSafe™ Barrier Rail

Barrier Rail

Length	Dim. "A"	Dim. "B"	Dim. "C"	Weight (lbs.)	Catalog Number
3'	32"	42"	52"	29.07	WBR3C007
4'	44"	54"	64"	37.65	WBR4C007
5'	56"	66"	76"	46.23	WBR5C007
6'	68"	78"	88"	54.81	WBR6C007
7'	80"	90"	100"	63.39	WBR7C007
8'	92"	102"	112"	71.97	WBR8C007
9'	104"	114"	124"	80.55	WBR9C007
10'	116"	126"	136"	89.13	WBR10C007



Barrier Rail Heights

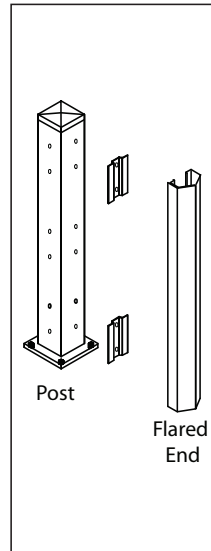
	Top of Rail Height from Floor
1st Rail	1'1-3/8"
2nd Rail	2'23-7/8"
3rd Rail	3'6-3/8"

Barrier Rail Options

Description	Weight (lbs.)	Catalog Number
pair of barrier rail pockets for lift-out rails	14.77	WBRPC007
flared end for 15" high post	9.76	WFE-13C007
flared end for 30" high post	21.02	WFE-28C007
flared end for 44" high post	31.53	WFE-42C007

Posts

Description	Height	Weight (lbs.)	Catalog Number
single barrier rail post	15"	32.86	WP15HC007
single or double barrier rail post	30"	51.06	WP30HC007
single, double, or triple barrier rail post	44"	69.27	WP44HC007
6" x 6" black, plastic cap		0.50	W78605



Barrier Rail

Schmidt's unique Barrier Rail is constructed of high-strength ASTM A-36 structural steel, providing the added safety that cold-rolled steel products simply can't deliver. Posts are 6" x 6" structural steel tube on a 10" square x 1/2" thick base plate.

The Barrier Rail is designed to protect against a 10,000 lb. load at 4 mph. For added protection, all posts also come with protective plastic caps to eliminate sharp edges.

Barrier Rail and Posts include hardware kits.



WorkSafe™ Guide Rail and Protectors



Guide Rail

Protect traffic aisle ways from forklift damage with rugged 3/8" guide rail angle units with pre-drilled mounting holes. Anchoring hardware is included.

The standard size for guide rail is 4" x 3" x 3/8" with a standard length of 10' - 17', unless otherwise specified. Larger angle is available. Schmidt guide rail is available in lengths of up to 20'.



Guide Rail		
Length	Weight (lbs.)	Catalog Number
3'	26.47	WGR03HC007
4'	35.29	WGR04HC007
5'	44.11	WGR05HC007
6'	52.93	WGR06HC007
7'	61.75	WGR07HC007
8'	70.57	WGR08HC007

Guide Rail Ends		
	Weight (lbs.)	Catalog Number
left hand	11.76	WGR30LHC007
right hand	11.76	WGR30RHC007

Rack End Protectors

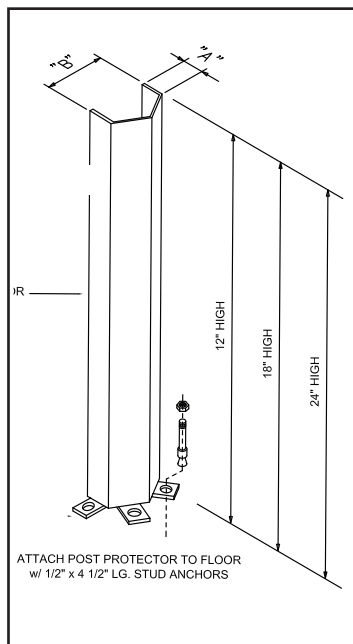
Heavy duty formed 6" x 3/8" steel plate with integral round 1/4" post protector, anchoring hardware is included.



Rack End Protectors			
Length	Left Hand/Right Hand	Weight (lbs.)	Catalog Number
3'	left hand	24.53	WREP3LHC007
3'	right hand	24.53	WREP3RHC007
4'	left hand	32.00	WREP4LHC007
4'	right hand	32.00	WREP4RHC007
5'	left hand	39.47	WREP5LHC007
5'	right hand	39.47	WREP5RHC007
6'	left hand	46.94	WREP6LHC007
6'	right hand	46.94	WREP6RHC007
7'	left hand	54.41	WREP7LHC007
7'	right hand	54.41	WREP7RHC007
8'	left hand	61.88	WREP8LHC007
8'	right hand	61.88	WREP8RHC007

Column and Pallet Rack Post Protectors

Constructed of 1/4" steel plate with four (4) anchoring feet in three standard heights, complete with anchoring hardware.



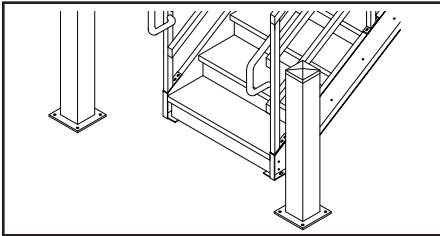
Column and Pallet Rack Post Protector

Height	Depth ("A")	Width ("B")	Weight (lbs.)	Catalog Number
12"	3"	4"	11.45	WPP1234HC007
12"	3"	6"	14.45	WPP1236HC007
12"	4"	9"	19.36	WPP1249HC007
12"	5"	11"	23.30	WPP12511HC007
12"	6"	13"	26.95	WPP12613HC007
18"	3"	4"	16.47	WPP1834HC007
18"	3"	6"	20.52	WPP1836HC007
18"	4"	9"	27.91	WPP1849HC007
18"	5"	11"	33.82	WPP18511HC007
18"	6"	13"	39.29	WPP18613HC007
24"	3"	4"	21.49	WPP2434HC007
24"	3"	6"	26.60	WPP2436HC007
24"	4"	9"	36.46	WPP2449HC007
24"	5"	11"	44.34	WPP24511HC007
24"	6"	13"	51.64	WPP24613HC007



WorkSafe™ Bollards and Guards

Bollards		
Height	Weight (lbs.)	Catalog Number
15"	32.86	WB26HC007
30"	51.07	WB30HC007
44"	69.27	WB44HC007
6" x 6" black plastic cap		W78605



Bollards

Easy floor mount units-no concrete work needed. Instant protection from aiseways, doors and equipment. Bollards are 6" square x 1/4" steel units and are A500 Grade B with yield strength of 46,000 psi on a 10" x 10" base plate. All bollards also come with protective plastic caps to eliminate sharp edges and are available in three (3) heights. Anchoring hardware is included.

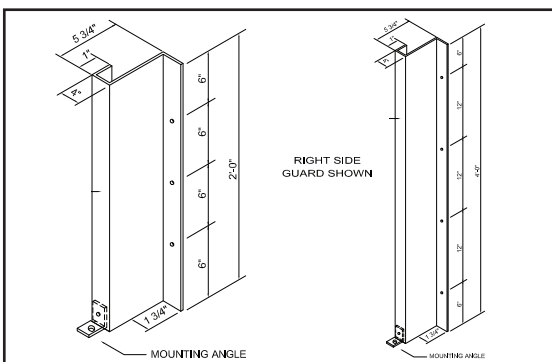
Sprinkler Guards		
Length	Weight (lbs.)	Catalog Number
1'	7.24	WPSX12HC007
1'-6"	8.42	WPSX18HC007
2'	9.60	WPSX24HC007
2'-6"	11.12	WPSX30HC007
3'	12.30	WPSX36HC007
3'-6"	13.82	WPSX42HC007
4'	15.00	WPSX48HC007



Sprinkler Guards

Commonly installed between racking system, sprinkler guards attach to the top of the racks themselves and protect the sprinklers that run between the racks. Also, the guards can be mounted to mezzanines by attaching them to the deck beams. Strong 5/8" diameter hot-rolled bar stocked with welded 1/4" mounting plates, sprinkler guards can be fabricated as short as 10" up to 5' lengths.

Overhead Door Track Guards				
Catalog Number	Height	Width	Depth	Wt./pr.
WDG24HC007	2'	5'3/4"	6'1/4"	21.31 lbs.
WDG48HC007	4'	5'3/4"	6'1/4"	42.63 lbs.



Overhead Door Track Guards

Guards encase door tracks to protect against damage from skids or pallet jacks.

Easy to install units to protect overhead door operation. Fabricated with rugged 1/4" steel plate, these dock door protectors come complete with floor mounting and wall mounting hardware.

Mezzanines/Work Platforms SpaceLoft™ and CardioDeck

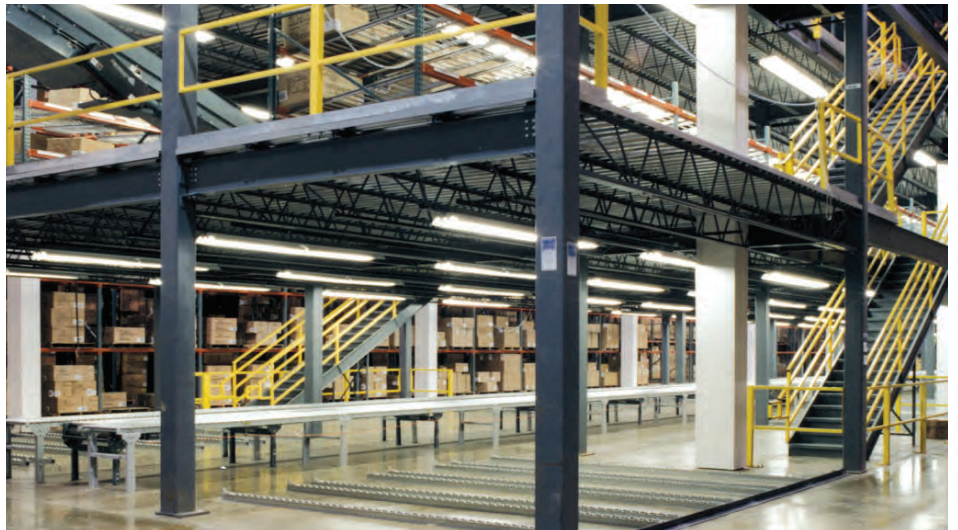
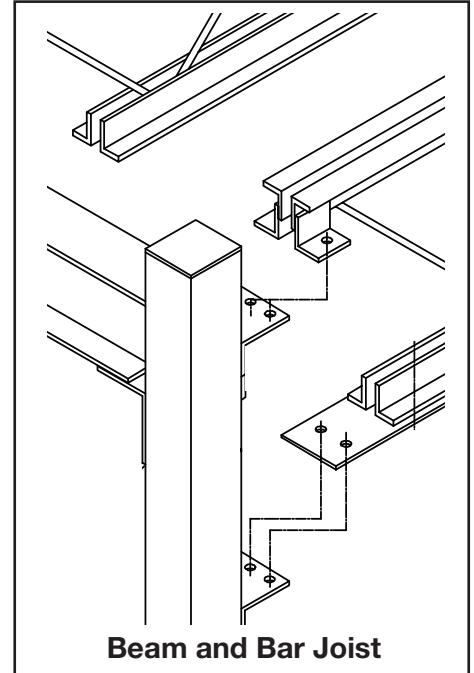
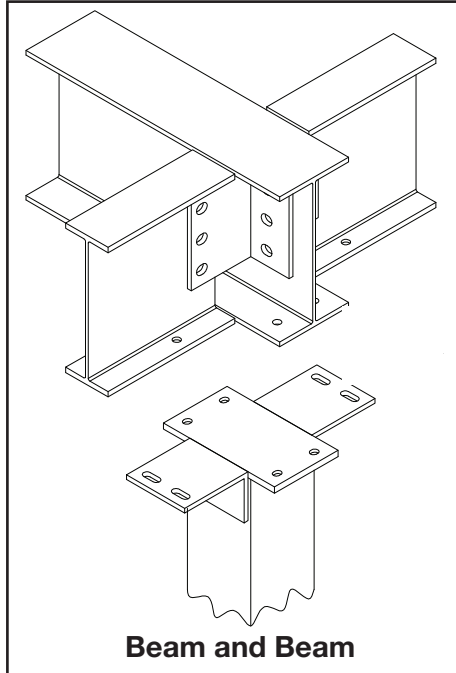


Schmidt Structural Products can engineer a custom solution to fit any need by utilizing existing space and by providing valuable and cost-effective solutions without the cost and disruption of new construction.

SpaceLoft™

SpaceLoft custom wide span structural mezzanines/work platforms help transform unused overhead space into valuable floor space. Each SpaceLoft mezzanine/work platform is designed to fit around existing columns and machinery to obtain the greatest amount of usable floor space. Openings and stairways can be located where needed.

Mezzanines/work platforms offer a simple nut-and-bolt design that allows for future expandability without extensive re-engineering. And any SpaceLoft mezzanine/work platform can be dismantled and re-assembled.



CardioDeck

Better utilize the space in your fitness center with CardioDeck. Upper levels can be designed to exact space requirements, accommodating any obstructions, unusual building characteristics, or heavy gym equipment requirements.





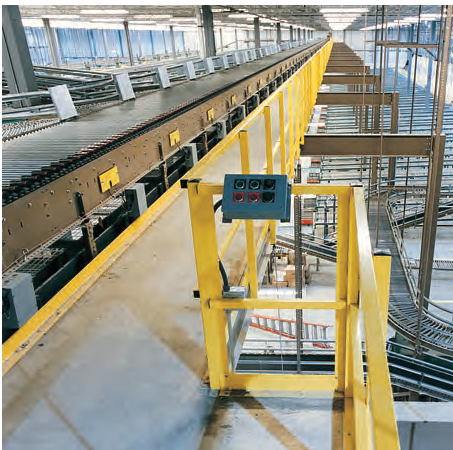
Mezzanines/Work Platforms Conveyor Supports and Catwalks



Conveyor Supports

Conveyor Supports are platforms designed to support an overhead conveyor system with multiple conveyors and sorters. These supports can be designed with decking for access between conveyors for maintenance.

Design accommodations can be made in the decking and framework for conveyors that run to multiple levels.



Catwalks


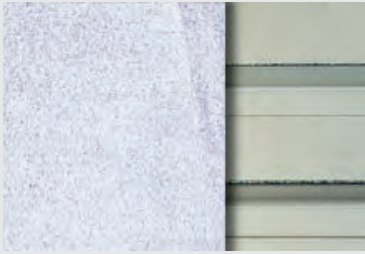
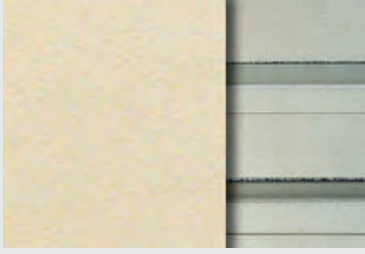
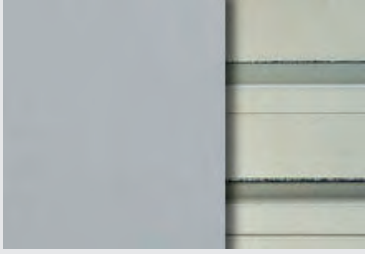


A catwalk configuration is ideal for situations that require quick easy access by personnel through and around a facility while avoiding obstacles below. Although catwalks are typically floor-supported, when necessary they can be designed for a clear area below with no column interruptions using a unique joist hanger arrangement.

In many respects, a catwalk is identical to a mezzanine/ work platform. Each provides an elevated structural platform that permits access within the cube of a building.



Mezzanines/Work Platforms Decking Material



Decking Material	Description	Typical Application	
Plywood on B-Deck	A durable, economical choice. 20-gauge galvanized B-deck is used as the standard, helping SpaceLoft mezzanines/work platforms maintain a like-new appearance for years. B-deck is typically covered with one or two layers of plywood.	Suitable for in-plant offices, enclosures, storage, and a variety of other uses.	
Concrete over B-Deck	Concrete is poured-in-place over B-deck.	Often specified in sites which require all fireproof materials, but can be applied in any facility which needs the durability and permanence that only concrete can offer.	
Engineered Materials	Various brands of wear-resistant deck material are recommended in applications requiring a variety of thicknesses, colors and surfaces are available.	Recommended in applications requiring a solid floor which may be subject to heavy traffic loads from wheeled carts, dollies or lifts.	
ResinDek® on B-Deck	Supports foot traffic and live/dead loads from 1,250 lbs to 8,000 lbs. Resists stains and scratches. Superior cleanability. Panel joints are designed to handle rated loads when installed as recommended.	Appropriate for almost any application on mezzanines/work platforms or conveyor support systems.	
Diamond Plate Decking	Provides outstanding wear resistance, with embossed pattern to reduce slippage. The strength of the steel helps to distribute concentrated loads. Steel deck is also available without a diamond pattern.	This is the material of choice for heavy loads and to resist damage in pallet loading drop areas.	
Open Bar Grating	By far the strongest and most versatile type of open deck available. It allows maximum transfer of heat, sound, and ventilation between levels.	Often specified in sites which require all fireproof materials or ventilation requirements.	



Stairs and Ladders

Stairs and Stair Towers

IBC Code Stairs

Deck Height	Treads	Weight (lbs.)	Horizontal Run	Catalog Number
up to 2'4"	3	304.08	2'-10½"	WIBC-36-28H
up to 2'11"	4	390.43	3'-9½"	WIBC-36-35H
up to 3'6"	5	459.46	4'-8½"	WIBC-36-42H
up to 4'1"	6	528.42	5'-7½"	WIBC-36-49H
up to 4'8"	7	597.39	6'-6½"	WIBC-36-56H
up to 5'3"	8	683.81	7'-5½"	WIBC-36-63H
up to 5'10"	9	752.76	8'-4½"	WIBC-36-70H
up to 6'5"	10	821.73	9'-3½"	WIBC-36-77H
up to 7'	11	908.05	10'-2½"	WIBC-36-84H
up to 7'7"	12	977.02	11'-1½"	WIBC-36-91H
up to 8'2"	13	1046.07	12'-½"	WIBC-36-98H
up to 8'9"	14	1115.02	12'-11½"	WIBC-36-105H
up to 9'4"	15	1201.36	13'-10½"	WIBC-36-112H
up to 9'11"	16	1270.32	14'-9½"	WIBC-36-119H
up to 10'6"	17	1339.36	15'-8½"	WIBC-36-126H
up to 11'1"	18	1408.33	16'-7½"	WIBC-36-133H
up to 11'8"	19	1494.66	17'-6½"	WIBC-36-140H
up to 12'	20	1552.92	18'-5½"	WIBC-36-144H

Note: Tread is 11" deep with 7" rise, 36" wide, closed treads with closed risers. Includes internal stair handrails.

OSHA Code Stairs

Deck Height	Treads	Weight (lbs.)	Horizontal Run	Model Number
up to 2'3"	2	152.16	1'-8"	WOSHA-36-27H
up to 3'	3	219.12	2'-6¾"	WOSHA-36-36H
up to 3'9"	4	297.10	3'-4½"	WOSHA-36-45H
up to 4'6"	5	337.42	4'-2½"	WOSHA-36-54H
up to 5'3"	6	387.86	5'	WOSHA-36-63H
up to 6'	7	438.31	5'-9½"	WOSHA-36-72H
up to 6'9"	8	506.07	6'-7½"	WOSHA-36-81H
up to 7'6"	9	556.60	7'-5½"	WOSHA-36-90H
up to 8'3"	10	607.05	8'-3"	WOSHA-36-99H
up to 9'	11	674.81	9'-1"	WOSHA-36-108H
up to 9'9"	12	725.35	9'-10½"	WOSHA-36-117H
up to 10'6"	13	775.79	10'-8¼"	WOSHA-36-126H
up to 11'3"	14	826.31	11'-6"	WOSHA-36-135H
up to 12'	15	894.71	12'-3¾"	WOSHA-36-144H

Note: Tread is 9¾" deep with 9" rise, 36" wide, open treads with open risers. Includes internal stair handrails.

Stairs and Stair Towers

Schmidt offers a wide range of pre-designed stairs based on the height of existing decks. Schmidt also specializes in designing and fabricating custom stairs, landings and gates. Industrial stairs and stair towers are available with either open-riser or closed-riser designs, in welded or bolted construction, with stair treads offered in either open grate or diamond plate material.

Stair towers are used to access multi-level structures. Unlike individual stairs that are incorporated with rack and shelving systems, often stairs are required to be independent of the system, Schmidt stair towers are a self-supported structures that have multiple levels to exit onto the rack modules.

Stairs are constructed of heavy duty MC10 x 8.4# structural channel. Stringers are painted in Schmidt 005 Gray and handrails are painted in Schmidt 007 Safety Yellow. Deck heights over 12 ft. require an additional intermediate landing.



Stairs and Ladders

Crossovers and Landings



Crossovers

Available in a wide variety of standard sizes and configurations with under-clearances up to 6'-0", and unobstructed bridge spans up to 8'-0". Custom designs are available.

Landings

Landings are required for deck heights over 12 ft. Schmidt landings are 4-column supported using 2½" square tubular uprights and ¼" x 6" top framing. Landings are powder coated in Schmidt 005 Gray. Handrails and kick-plate are painted Schmidt 007 Safety Yellow.

Crossovers			
Bridge Length	Deck Height	Weight (lbs.)	Catalog Number
3'	2'	454.86	WCO3-OSHA-24H
3'	3'	520.31	WCO3-OSHA-36H
3'	4'	689.39	WCO3-OSHA-48H
3'	5'	750.60	WCO3-OSHA-60H
3'	6'	809.23	WCO3-OSHA-72H
4'	2'	507.33	WCO4-OSHA-24H
4'	3'	598.79	WCO4-OSHA-36H
4'	4'	741.85	WCO4-OSHA-48H
4'	5'	803.06	WCO4-OSHA-60H
4'	6'	878.08	WCO4-OSHA-72H
5'	2'	567.84	WCO5-OSHA-24H
5'	3'	756.42	WCO5-OSHA-36H
5'	4'	802.37	WCO5-OSHA-48H
5'	5'	863.58	WCO5-OSHA-60H
5'	6'	938.59	WCO5-OSHA-72H
6'	2'	706.45	WCO6-OSHA-24H
6'	3'	797.92	WCO6-OSHA-36H
6'	4'	940.98	WCO6-OSHA-48H
6'	5'	1002.19	WCO6-OSHA-60H
6'	6'	1077.20	WCO6-OSHA-72H
7'	2'	758.36	WCO7-OSHA-24H
7'	3'	849.83	WCO7-OSHA-36H
7'	4'	992.88	WCO7-OSHA-48H
7'	5'	1054.09	WCO7-OSHA-60H
7'	6'	1129.11	WCO7-OSHA-72H
8'	2'	828.60	WCO8-OSHA-24H
8'	3'	920.07	WCO8-OSHA-36H
8'	4'	1063.13	WCO8-OSHA-48H
8'	5'	1124.34	WCO8-OSHA-60H
8'	6'	1199.35	WCO8-OSHA-72H



Landings			
Size	Description	Weight (lbs.)	Model Number
3' x 3'	intermediate landing (straight run)	537.37	WL-INT-3636H
3'6" x 3'6"	intermediate landing (L-shaped run)	590.16	WL-L-4242H
3'6" x 3'6"	top landing	563.91	WL-TOP-4242H
4' x 4'	top landing	628.56	WL-TOP-4848H
3'6" x 7'	intermediate landing (U-shaped run)	1064.95	WL-U-4284H



Stairs and Ladders

Ladders and Ship Ladders

Vertical Ladders

Ladder Height	Maximum Deck Height	Weight (lbs.)	Catalog Number
11'-6½"	8'	116.20	WVL-08-HC007
12'-6½"	9'	123.10	WVL-09-HC007
13'-6½"	10'	129.99	WVL-10-HC007
14'-6½"	11'	136.88	WVL-11-HC007
15'-6½"	12'	143.78	WVL-12-HC007
16'-6½"	13'	150.67	WVL-13-HC007
17'-6½"	14'	157.57	WVL-14-HC007
18'-6½"	15'	164.46	WVL-15-HC007
19'-6½"	16'	171.36	WVL-16-HC007
20'-6½"	17'	178.25	WVL-17-HC007
21'-6½"	18'	185.14	WVL-18-HC007
22'-6½"	19'	192.04	WVL-19-HC007
23'-6½"	20'	198.93	WVL-20-HC007

Vertical Ladders with Cage

15'-6½"	12'	265.58	WVL-12-HC007
16'-6½"	13'	280.81	WVL-13-HC007
17'-6½"	14'	295.94	WVL-14-HC007
18'-6½"	15'	323.43	WVL-15-HC007
19'-6½"	16'	338.56	WVL-16-HC007
20'-6½"	17'	353.69	WVL-17-HC007
21'-6½"	18'	368.82	WVL-18-HC007
22'-6½"	19'	395.95	WVL-19-HC007
23'-6½"	20'	411.45	WVL-20-HC007

Ships Ladders

Ladder Height	Weight (lbs.)	Catalog Number
3'	134.06	WSL-03-HC007
4'	157.26	WSL-04-HC007
5'	180.44	WSL-05-HC007
6'	189.57	WSL-06-HC007
7'	226.85	WSL-07-HC007
8'	250.05	WSL-08-HC007
9'	273.25	WSL-09-HC007
10'	269.43	WSL-10-HC007
11'	319.64	WSL-11-HC007
12'	342.84	WSL-12-HC007
13'	366.04	WSL-13-HC007
14'	389.22	WSL-14-HC007
15'	412.43	WSL-15-HC007
16'	435.63	WSL-16-HC007
17'	458.83	WSL-17-HC007
18'	482.01	WSL-18-HC007
19'	505.58	WSL-19-HC007
20'	528.42	WSL-20-HC007



Ladders

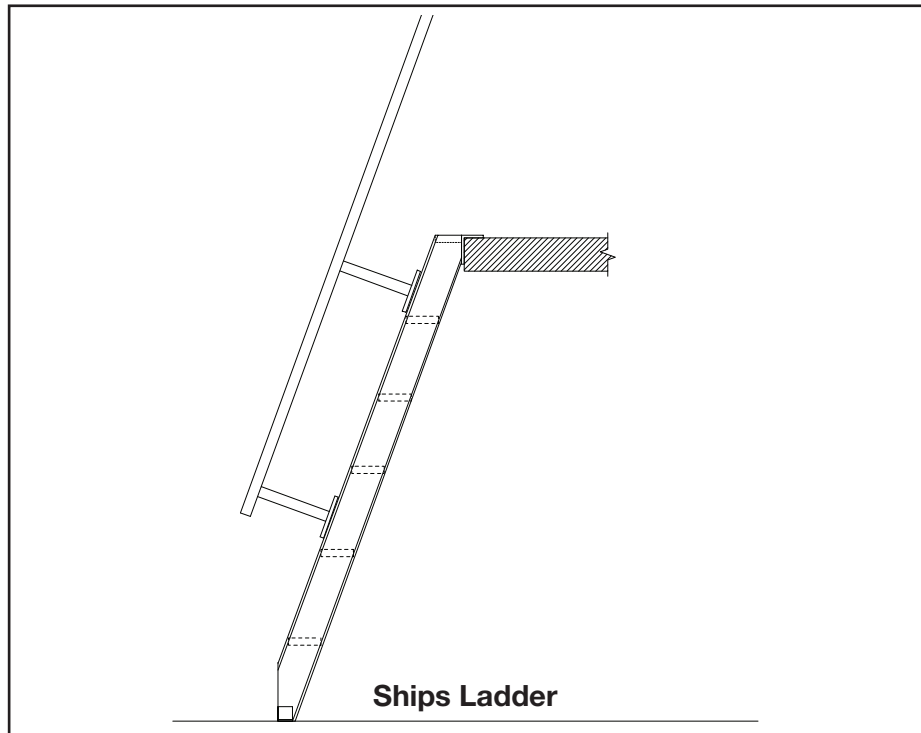
Vertical ladders are available with and without cages. Ladders over 20' require a cage by code. Ladders are used to access mezzanines/work platforms as a secondary access, catwalks, maintenance areas or as roof access for single level office buildings.

Ships Ladders

Ships ladders are typically designed at a 75 degree angle and constructed with channel stringers with 1½" square tube handrails.

Vertical and ships ladders are 2 ft. wide.

All ladders are powder coated in Schmidt 007 Safety Yellow. Custom fixed ladders can be manufactured.





Handrail and Gates





Handrail

Standard handrail is fabricated from 1½" x 14 gauge square steel tube and can be fabricated to meet any project specifications. The standard color is safety yellow but handrails are available in any of Schmidt's 24 standard colors. Handrails are sold per lineal foot price and can be cut to size in the field. Handrail is also available in 1¼" schedule 40 pipe.



Handrail		
Description	Weight (lbs.)	Catalog Number
deck mounted corner post kit	21.14	WDMPC-HC007
deck mounted post kit	21.33	WDMP-HC007
6' section of 2-rail handrail with kick plate	35.44	W2RAIL-HC007
6' section of 3-rail handrail with kick plate	57.87	W3RAIL-HC007
1½" x 1½" black plastic cap	0.13	W78640
2" x 2" black plastic cap	0.25	W78630
2½" x 2½" black plastic cap	0.38	W78620

Gates

Gate Type/ Catalog Number	Weight (lbs.)	Description	
Swing WG-SWING-HC007	75.25	This dual swing gate features spring hinges, allowing a full clearance of 5'9" with both gates open. Gates are securely latched with two rugged cane bolts fastened through the mezzanine/work platform deck. Custom gates available. Swing gates are used when personnel are available to open the gate. Impact gates have a molded rubber bumper allowing fork lift drivers to open the gate without any assistance.	
Impact WG-IMPACT-HC007	128.10		
Corral WG-CORRAL-HC007	265.24	Standard corral gates allow a deck opening of 6' and are fabricated from square steel tube. They are designed to pivot and provide an integral railing at the mezzanine's edge to prevent accidental falls. Corral gates allow for quick and safe loading of large pallet loads. Once loaded, the gate is pivoted back to open the mezzanine/work platform deck for forklift access to the pallet from below.	
Sliding (manual or electric) WG-SLIDE-HC007	208.49	Sliding gates span a total length of 10' when closed and allow a clear opening of 5'8". Requires no pallet drop guard, the gate rolls on the top of the deck. A 16' minimum footprint is required. Sliding gates for mezzanines/work platforms are available in both electric and manual options. Forklift operators can open the motorized gate by remote control, reducing labor and time.	
Pivot WG-PIVOT-HC007	138.91	The gate pivots 90° from a single point on the floor, leaving a deck opening of 5'8". Double doors may be ordered, permitting a deck opening of 11'. Available with left-hand or right-hand opening and attaches to any standard handrail. Minimum overhead clearance required is 7'.	

Cantilever Rack

Standard Sizes

Column Heights	Straight Arm Lengths	20" Inclined Arm Lengths	Base Length Single-Sided	Base Length Double-Sided
8'	12"	12"	31"	53"
10'	18"	18"	31"	53"
12'	24"	24"	37"	65"
16'	36"	36"	46"	82"
18'	48"	48"	58"	106"
20'	60"	60"	74"	130"

Column Capacities

10" Depth Columns

Height	Capacity (000's of pounds per single side arm length)					
	12" Arm	18" Arm	24" Arm	36" Arm	48" Arm	60" Arm
8'	25	23.5	24	19	16	10.7
10'	25	23.5	24	19	16	10.7
12'	25	23.5	24	19	16	10.7
16'	25	20	18	19	16	11.5
18'	29	19	16	19	16	13.5
20'	21	17.5	15.8	12.8	11.2	9.8

16" Depth Columns

Height	Capacity (000's of pounds per single side arm length)					
	12" Arm	18" Arm	24" Arm	36" Arm	48" Arm	60" Arm
8'	65	54	41	20	20	16.3
10'	65	54	41	20	20	16.3
12'	65	54	41	20	20	16.3
16'	65	54	41	20	20	16.3
18'	65	54	41	20	20	16.3
20'	65	54	41	20	20	16.3

Arm Heights and Capacities

Length	Capacity (000's of pounds)			
	3" Arm	4" Arm	5" Arm	6" Arm
12"	6	9.04	12	15
18"	5.2	9	11	14.82
24"	3.9	6.78	10	11
36"	2.6	4.52	8.12	7.41
48"	1.95	3.01	6	5.56
60"	1.56	2.7	4.8	4.45



Cantilever Rack

Cantilever rack is especially effective with long, bulky, or odd shaped loads. Built with industry-leading engineering resources and quality control, it's a heavy-duty, long-life storage solution ideal for large, irregular loads.

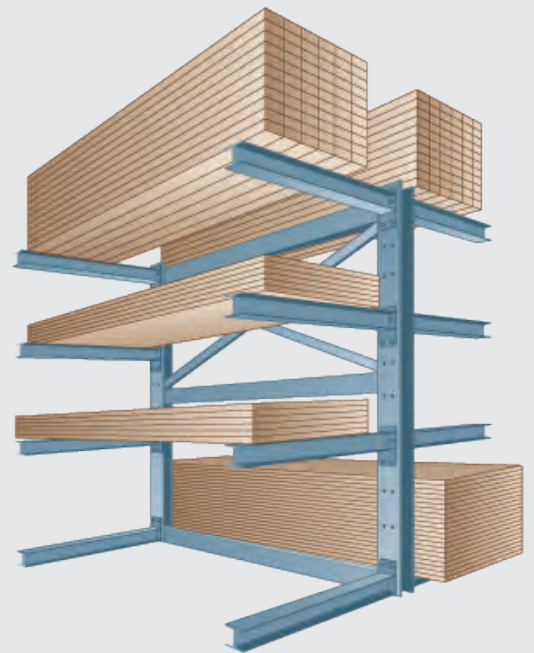
Standard column heights to 20 feet and a single-side arm capacities of up to 65,000 lbs. Hot-dipped galvanized is available. Schmidt offers custom engineering, configuration and installation.

Typical applications include:

- Plywood
- Pipe
- Conduit
- Extrusions
- Lumber
- Structural
- Doors
- Rolls
- Furniture
- Sheet steel
- Boxes
- Building materials
- Appliances
- Tubing
- Pallets

Available accessories:

- Arm end stops - Pipe mounts configured to fit on arm end
- Decking - wire or roof decking



Stacking Cradles

HF Stacking Cradle System



Cradle	Description	Storage Application	
<p>Long Goods</p>	<p>Two cradles required. For material lengths of 40' or more, may require three or more cradles. Design allows cradles to be self-centering and automatically lock. Capacities from 2 to 5 tons, stacking up to 10 units high.</p>	<ul style="list-style-type: none"> • Channel • Angle • Flat stock • Beams • Bar stock • Pipe • Tubing 	
<p>Flat Goods</p>	<p>Provides a wider full sheet support for materials up to 48" wide, with two cradles. Full-length cradles provide center support for thinner material. Capacities from 2 to 5 tons, stacking up to 10 units high.</p>	<ul style="list-style-type: none"> • Sheet metal flat stock • Heavy steel plate stock • Plastic sheet stock • Wood sheet stock • Plasterboard sheet stock • Glass sheet stock 	
<p>Coil Goods</p>	<p>Coils are stacked with fast access even to the bottom of the stack. Coils may be stacked only inches apart. Capacities from 5 to 30 tons, coil diameters up to 72" stacking up to 6 units high.</p>	<ul style="list-style-type: none"> • Steel coils • Aluminum coils • Rolled flat stock • Large steel pipe sections • Roll paper goods • Oversized PVS pipe sections 	
<p>Pallet</p>	<p>Provides full, center support for thin sheet material with high stacking without damage or distortion. Extensions are available for picking individual sheets. Typical capacity is 8 tons per pallet.</p>	<ul style="list-style-type: none"> • Sheet metal flat stock • Thin steel plate stock • Plastic sheet stock • Thin wood sheet stock • Plasterboard sheet stock • Thin glass sheet stock 	
<p>Finished Goods</p>	<p>Custom designed for each need. Weight capacities and size of the cradles will depend on the intended storage purpose. The stacking capacity is also dependant on what type of product is being stored.</p>	<ul style="list-style-type: none"> • Appliances • Motors • Pumps • Castings • Home goods • Machinery 	
<p>Spreader Beam Unit</p>	<p>Interlocking, stacking cradles are moved by a twin-hook overhead crane equipped with a spreader beam, for versatile placement and maneuvering in tight spaces. Often, material handling labor can be reduced by 50% or more.</p>	<p>Designed with built-in hooks for simple engagement of cradles, providing easy access to stack and sort inventory. A single unit can be used to handle three lengths of material or to handle multiple cradle rows.</p>	

Color Chart

24 Designer Colors

Standard Colors

The standard color for Schmidt Structural Products is 007 Safety Yellow and 005 Gray. Both colors are formulated for moderate protection for outdoor use.



To assure rust resistance and paint adhesion, all Schmidt steel products receive a state of the

art pre-paint conditioning that includes a thorough cleansing by a hot spray washing process, then a specially formulated coating is applied creating a surface that resists corrosion and improves paint adhesion. In addition to the standard Safety Yellow 007 and Gray 005 colors, virtually all steel products are available in the 24 colors shown below.

Schmidt's standard 1 mil thick paint finish is perfect for most applications. The paint surface is tough and durable and offers a

beautiful drip-free surface, excellent edge coverage and environmentally friendly application.



NOTE: Colors shown are as close to actual finishes as the printing process allows. Do not make your final color selection on the color shade shown on this page. Schmidt Color Charts are available for a more accurate color match. Exposure to high humidity, chlorine salts, abrasive cleaners, germicidal cleaners and acids can damage the finish and will void the guarantee.

PENCO® Shelving Systems

Shelving Interface with Penco Products

Schmidt work platforms, stairs and handrail are natural complements to shelving manufactured by Schmidt's sister company, Penco Products, Inc. Penco's Clipper® and Erectomatic® Shelving lines are each completely configurable for multi-level and high-rise applications and can be integrated seamlessly with Schmidt Structural Products by our engineering department.

Both Clipper and Erectomatic shelving lines share the same shelf. Penco Hi-Performance® shelves are made with a box-beam construction that produces a high strength-to-weight ratio. Carrying capacities vary depending on whether a medium duty, heavy duty or extra heavy duty shelf is used. Many sizes are available.

Each shelving line uses its own custom posts and clips, making shelf positioning very easy. Clipper posts allow shelf adjustment on 1" vertical centers and Erectomatic posts allow adjustment on 1-1/2" centers. Both use a flush front design for posts in the face of the unit that permits full access to the width of each shelf.

For extra heavy loads, the Erectomatic line offers a heavy duty "H" post that is 1-1/2" wide and nearly 3" deep that carries more load than standard posts and can be used to reach greater heights. H-Posts with beams and a variety of decking choices are also available for "pass through" order picking.

Shelving systems can be designed as "closed" installations with solid backs and welded side panels, or as "open" style structures that are held together with side and rear sway bracing. In Hi-Rise applications where free-path man-aboard order picking equipment is used, guide rail and cross-aisle top-ties are used to keep the structure sound.

All Schmidt and Penco Storage Systems are available with drawings that have been reviewed and approved by a structural engineer licensed in the state where the installation will take place.

Each engineered shelving system is custom designed to account for all the specific conditions such as building columns and door locations. Careful consideration is given to insure that they are designed to comply with structural requirements for the seismic zone where the project will be installed.



Limited Lifetime Warranty



Our Spaceloft mezzanine/work platform is constructed of the highest quality steel, and has been thoroughly engineered according to strict ASTM standards. Schmidt Structural Products proudly stands behind its line of mezzanines/work platforms, barrier rails, HF stacking cradles and allied material handling products.

A purchase from Schmidt Structural Products is an investment in quality. We guarantee that when we ship your Spaceloft mezzanine/work platform, it is free from defects in material and workmanship. This warranty applies to mezzanines/work platforms installed by Schmidt Structural Products or its authorized installer (on record at the time of installation) and subjected to normal use, within specifications as itemized on Schmidt Structural Products final erection drawings. If the mezzanine/work platform is sold or transferred warranty may not be assigned to any person or entity other than the original purchaser. In cases of modification, dismantling and/or moving without a Schmidt Structural Products authorized installer, misuse or deviation from manufacturer's standards, warranty will not apply.

The sole remedy of the party entitled to the warranty is to have Schmidt Structural Products repair or replace at our discretion any defective components originally manufactured by us, including removal, delivery and installation. Warranty does not apply to materials manufactured by others; those components

may be covered by the original manufacturers. We are not liable for consequential, incidental or any other forms of damage. For a more specific and detailed limited warranty statement, please refer to and Schmidt Structural Products General Terms and Conditions.

If you have any questions regarding your installation, please contact the distributor from whom you made your purchase. If you require further assistance, call us at 800-523-6719. We believe that providing you with our full support and technical expertise is the best way to demonstrate that, at Schmidt Structural Products we value the relationships we make.

SCHMIDT

STRUCTURAL PRODUCTS

www.schmidtstructural.com



Every customer's first choice to transform space into safe, secure and effective storage.

Affiliate company, Penco Products, Inc., is the leader in the design, engineering and fabrication of storage products and accessories. With over 145 years of experience manufacturing metal storage products, all product lines are built to the highest standard of fit, finish and function.



www.pencoproducts.com



Lockers



Bleachers & Team Benches



Clipper® & Erectomatic® Shelving



Shop Furniture



RivetRite® Shelving



Storage Cabinet



This catalog was printed on paper made in the USA.



Pictured: QuickShip Barrier Rail
 © Copyright 2014 Schmidt Structural Products, Inc.
 Work Platform and Safety Products 07-14 SSP
 general-brochure_July2014.indd/pdf